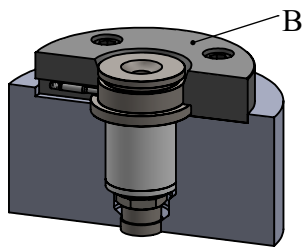
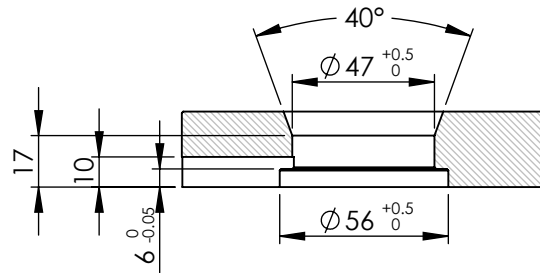


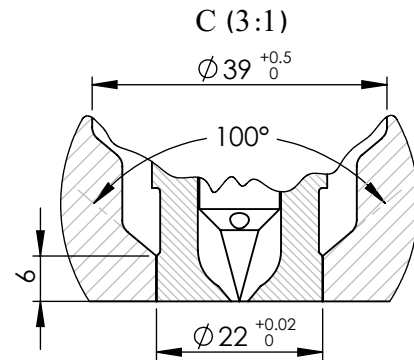
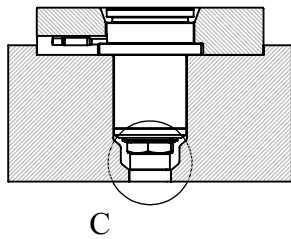
Detail view of nozzle's entry



Isometric view of nozzle's placement in the mold



B : Detail view of injection ring




Detail view of nozzle's injection point

* There are 13 standard available sizes of this nozzle type as listed below.

** The "L1" length can be increased up to 250 mm by customer's order.

NOZZLE	S 54 N 101 *	L1 (mm) **	L2 (mm)	Heater's Power (W)
S 54 N 101 • 81		81	57	300
S 54 N 101 • 91		91	67	300-350
S 54 N 101 • 101		101	77	350-400
S 54 N 101 • 111		111	87	400-450
S 54 N 101 • 121		121	97	400-450
S 54 N 101 • 131		131	107	450-500
S 54 N 101 • 141		141	117	500-600
S 54 N 101 • 151		151	127	600-650
S 54 N 101 • 161		161	137	600-650
S 54 N 101 • 171		171	147	600-650
S 54 N 101 • 181		181	157	650-700
S 54 N 101 • 191		191	167	650-700
S 54 N 101 • 201		201	177	700-750

Title :	
NOZZLE	
Model :	Tel. No.: (+98)2122436853 Website : www.ihco.com
S 54 N 101 • L1	