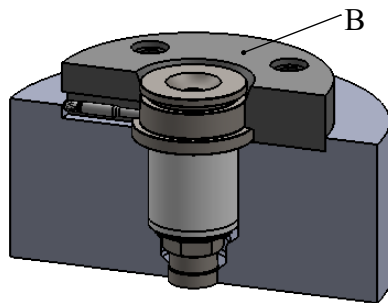
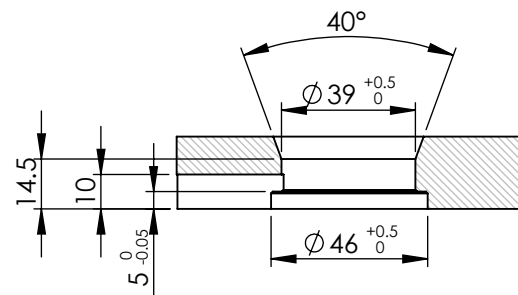


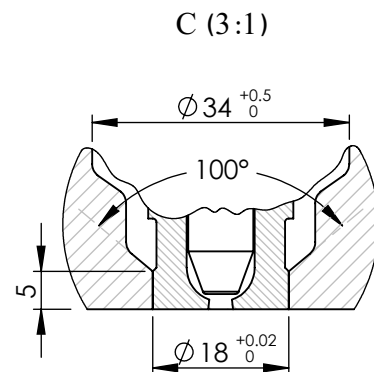
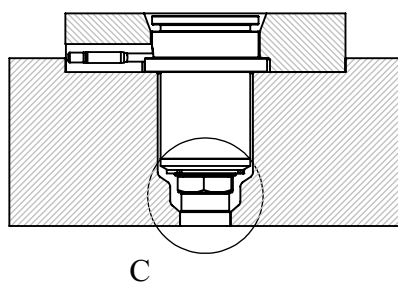
Detail view of nozzle's entry



Isometric view of nozzle's placement in the mold



B : Detail view of injection ring




Detail view of nozzle's injection point

\* There are 9 standard available sizes of this nozzle type as listed below.

\*\* The "L1" length can be increased up to 250 mm by customer's order.

NOZZLE	S 44 N 102 *	L1 (mm) **	L2 (mm)	Heater's Power (W)
S 44 N 102 * 68		68	48	250
S 44 N 102 * 78		78	58	250-300
S 44 N 102 * 88		88	68	300-350
S 44 N 102 * 98		98	78	300-350
S 44 N 102 * 108		108	88	350-400
S 44 N 102 * 118		118	98	400-450
S 44 N 102 * 128		128	108	450-500
S 44 N 102 * 138		138	118	550-600
S 44 N 102 * 148		148	128	550-600

Title :	
<b>NOZZLE</b>	
Model :	Tel. No.: (+98)2122436853 Website : <a href="http://www.ihco.co">www.ihco.co</a>
<b>S 44 N 102 * L1</b>	