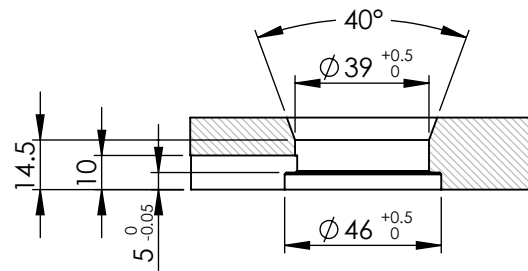
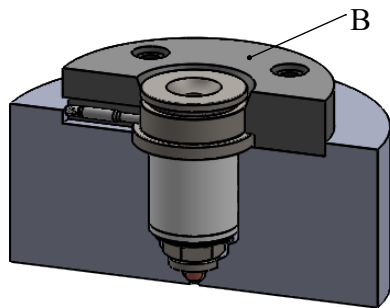
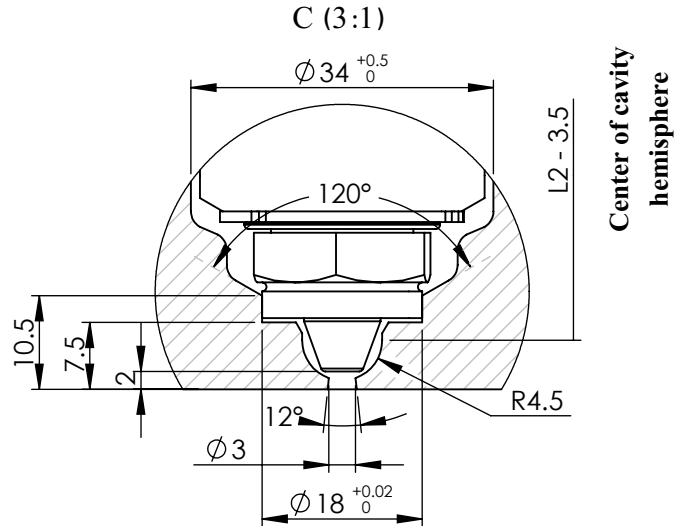
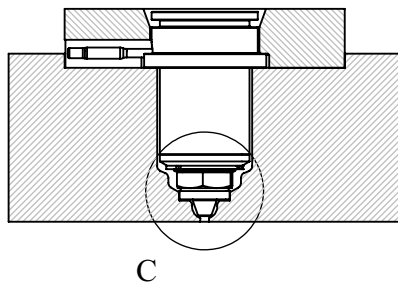


Detail view of nozzle's entry



B : Detail view of injection ring

Isometric view of nozzle's placement in the mold




Detail view of nozzle's injection point

* There are 9 standard available sizes of this nozzle type as listed below.

** The "L1" length can be increased up to 250 mm by customer's order.

NOZZLE S 44 G 102 *	L1 (mm) **	L2 (mm)	Heater's Power (W)
S 44 G 102 • 66	66	46	250
S 44 G 102 • 76	76	56	250-300
S 44 G 102 • 86	86	66	300-350
S 44 G 102 • 96	96	76	300-350
S 44 G 102 • 106	106	86	350-400
S 44 G 102 • 116	116	96	400-450
S 44 G 102 • 126	126	106	450-500
S 44 G 102 • 136	136	116	550-600
S 44 G 102 • 146	146	126	550-600

Title :	
NOZZLE	
Model :	Tel. No.: (+98)2122436853 Website : www.ihco.com
S 44 G 102 • L1	