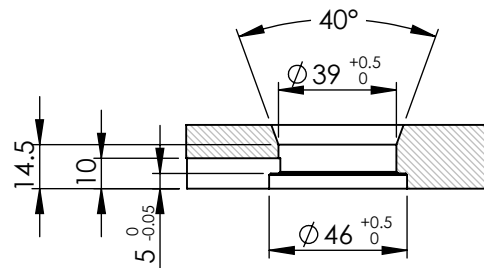
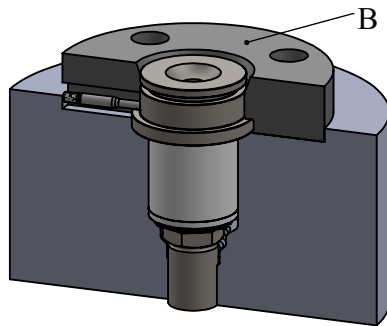


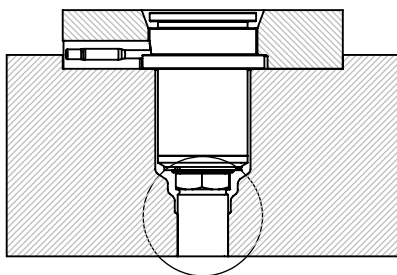
Detail view of nozzle's entry



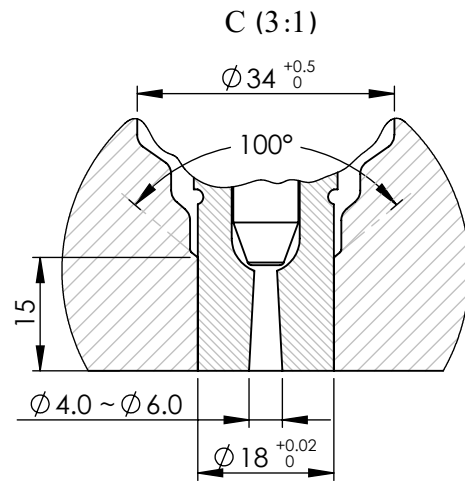
B : Detail view of injection ring



Isometric view of nozzle's placement in the mold



C




Detail view of nozzle's injection point

* There are 9 standard available sizes of this nozzle type as listed below.

** The "L1" length can be increased up to 250 mm by customer's order.

NOZZLE	S 44 C 102 *	L1 (mm) **	L2 (mm)	Heater's Power (W)
S 44 C 102 * 80		80	60	250
S 44 C 102 * 90		90	70	250-300
S 44 C 102 * 100		100	80	300-350
S 44 C 102 * 110		110	90	300-350
S 44 C 102 * 120		120	100	350-400
S 44 C 102 * 130		130	110	400-450
S 44 C 102 * 140		140	120	450-500
S 44 C 102 * 150		150	130	550-600
S 44 C 102 * 160		160	140	550-600

Title :	
NOZZLE	
Model :	Tel. No.: (+98)2122436853 Website : www.ihco.co
S 44 C 102 * L1	