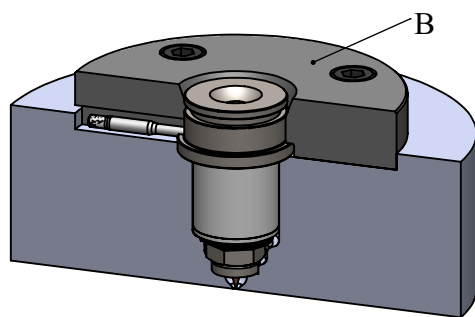
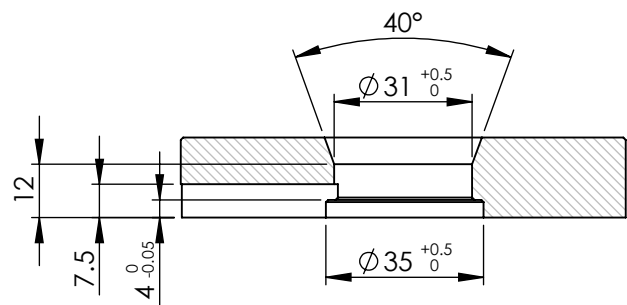


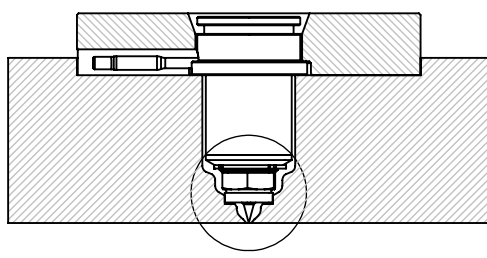
Detail view of nozzle's entry



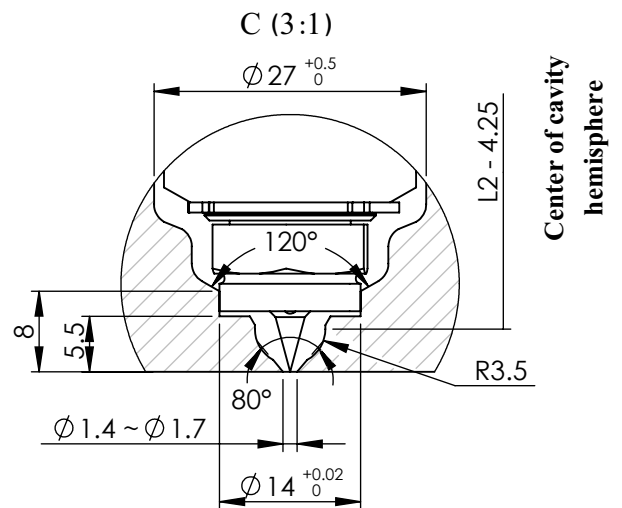
Isometric view of nozzle's placement in the mold



B : Detail view of injection ring



C




Detail view of nozzle's injection point

* There are 8 standard available sizes of this nozzle type as listed below.

** The "L1" length can be increased up to 150 mm by customer's order.

NOZZLE S 34 G 101 *	L1 (mm) **	L2 (mm)	Heater's Power (W)
S 34 G 101 * 55	55	38	200
S 34 G 101 * 65	65	48	200-250
S 34 G 101 * 75	75	58	250-300
S 34 G 101 * 85	85	68	250-300
S 34 G 101 * 95	95	78	300-350
S 34 G 101 * 105	105	88	300-350
S 34 G 101 * 115	115	98	350-400
S 34 G 101 * 125	125	108	400

Title :	
NOZZLE	
Model :	Tel. No.: (+98)2122436853 Website : www.ihco.co
S 34 G 101 * L1	