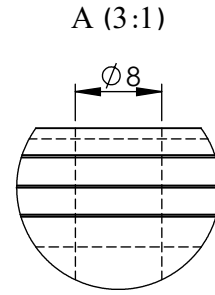
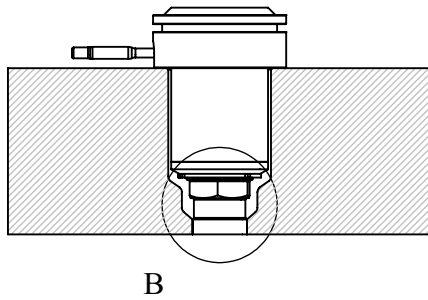
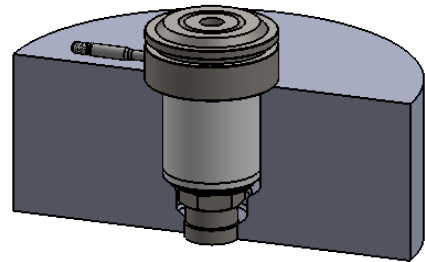


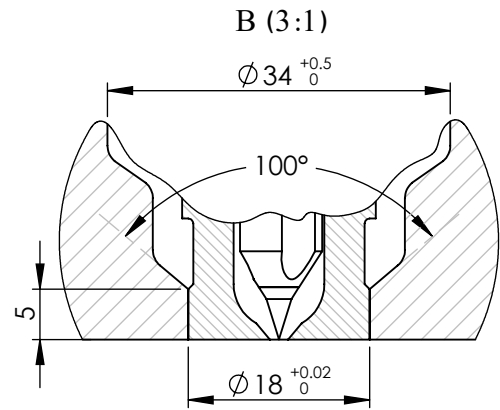
Isometric view of nozzle's placement in the mold



Detail view of nozzle's entry



B



Detail view of nozzle's injection point

* There are 9 standard available sizes of this nozzle type as listed below.

** The "L1" length can be increased up to 250 mm by customer's order.

| NOZZLE M 44 N 103 * | L1 (mm) ** | L2 (mm) | Heater's Power (W) |
|---------------------|------------|---------|--------------------|
| M 44 N 103 • 68 | 68 | 48 | 300 |
| M 44 N 103 • 78 | 78 | 58 | 300-350 |
| M 44 N 103 • 88 | 88 | 68 | 300-350 |
| M 44 N 103 • 98 | 98 | 78 | 350-400 |
| M 44 N 103 • 108 | 108 | 88 | 400-450 |
| M 44 N 103 • 118 | 118 | 98 | 450-500 |
| M 44 N 103 • 128 | 128 | 108 | 500-550 |
| M 44 N 103 • 138 | 138 | 118 | 550-600 |
| M 44 N 103 • 148 | 148 | 128 | 600-650 |

Title :

NOZZLE

Model :

M 44 N 103 • L1



Tel. No.: (+98)2122436853

Website : www.ihco.co