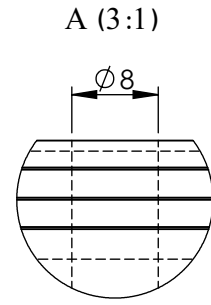
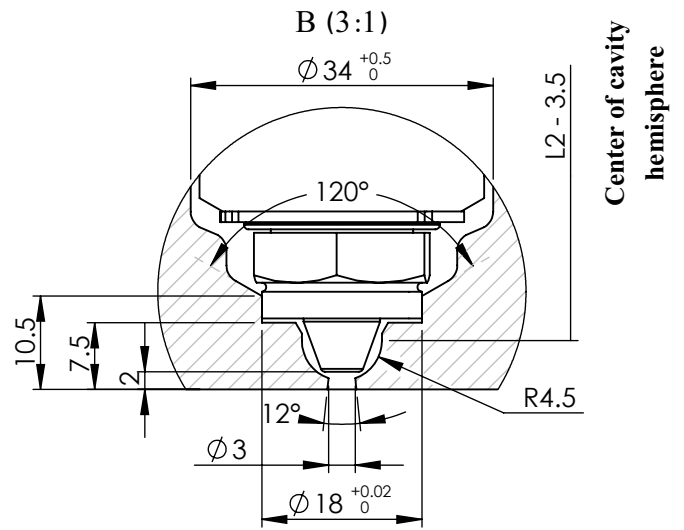
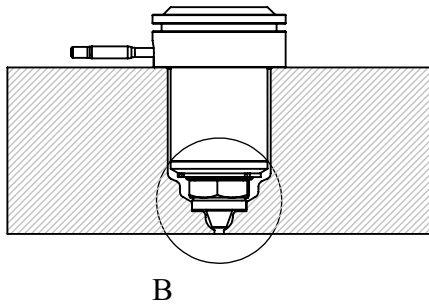
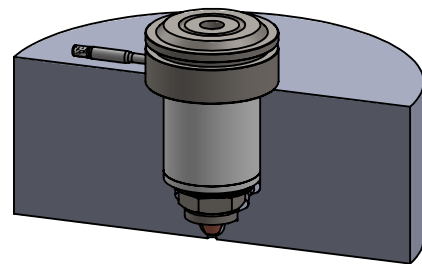


Isometric view of nozzle's placement in the mold



Detail view of nozzle's entry




Detail view of nozzle's injection point

* There are 9 standard available sizes of this nozzle type as listed below.

** The "L1" length can be increased up to 250 mm by customer's order.

NOZZLE M 44 G 102 *	L1 (mm) **	L2 (mm)	Heater's Power (W)
M 44 G 102 * 66	66	46	250
M 44 G 102 * 76	76	56	250-300
M 44 G 102 * 86	86	66	300-350
M 44 G 102 * 96	96	76	300-350
M 44 G 102 * 106	106	86	350-400
M 44 G 102 * 116	116	96	400-450
M 44 G 102 * 126	126	106	450-500
M 44 G 102 * 136	136	116	550-600
M 44 G 102 * 146	146	126	550-600

Title :	
NOZZLE	
Model :	Tel. No.: (+98)2122436853 Website : www.ihco.co
M 44 G 102 * L1	