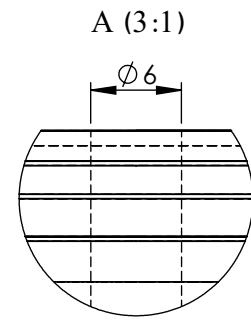
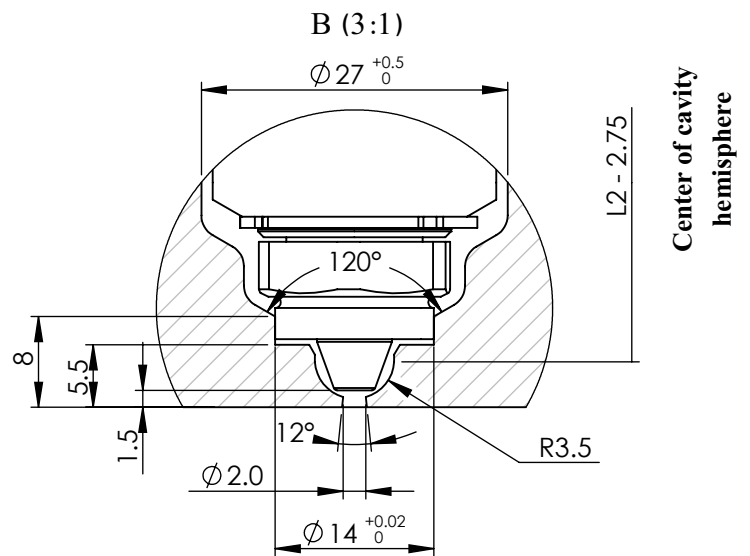
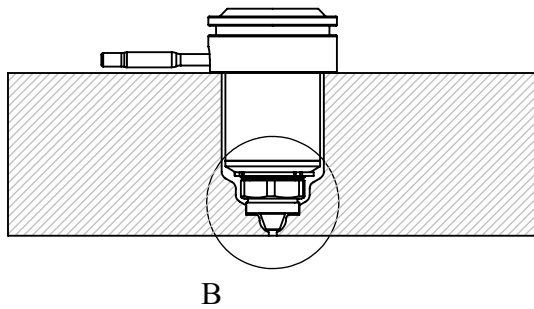
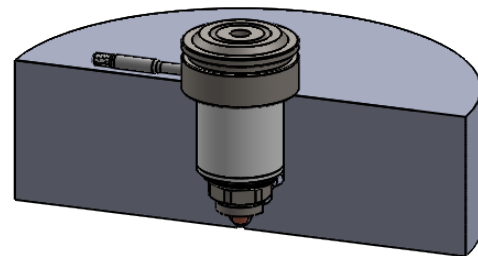


Isometric view of nozzle's placement in the mold



Detail view of nozzle's entry




Detail view of nozzle's injection point

* There are 8 standard available sizes of this nozzle type as listed below.

** The "L1" length can be increased up to 150 mm by customer's order.

NOZZLE M 34 G 102 *	L1 (mm) **	L2 (mm)	Heater's Power (W)
M 34 G 102 * 53.5	53.5	36.5	200
M 34 G 102 * 63.5	63.5	46.5	200-250
M 34 G 102 * 73.5	73.5	56.5	250-300
M 34 G 102 * 83.5	83.5	66.5	250-300
M 34 G 102 * 93.5	93.5	76.5	300-350
M 34 G 102 * 103.5	103.5	86.5	300-350
M 34 G 102 * 113.5	113.5	96.5	350-400
M 34 G 102 * 123.5	123.5	106.5	400

Title :	
NOZZLE	
Model :	Tel. No.: (+98)2122436853 Website : www.ihco.co
M 34 G 102 * L1	