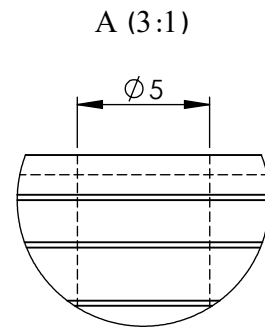
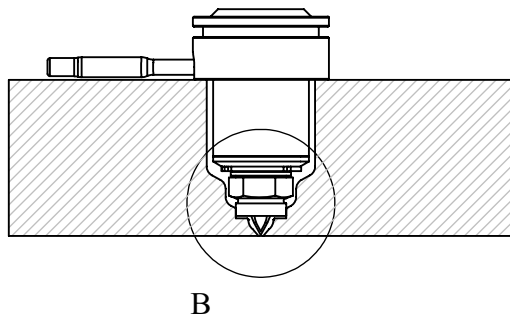
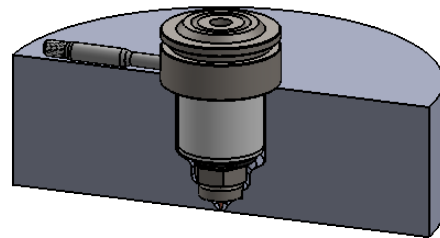


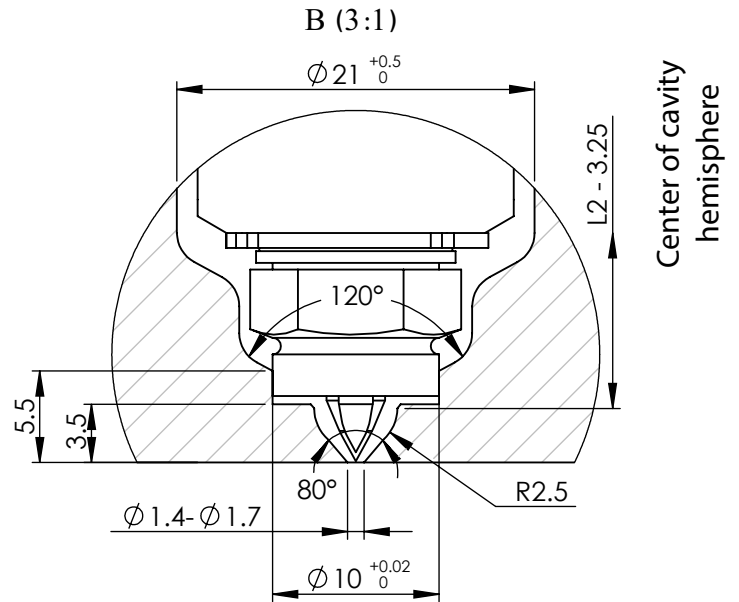
Isometric view of nozzle's placement in the mold



Detail view of nozzle's entry



B




Detail view of injection point

\* There are 7 standard available sizes of this nozzle type as listed below.

\*\* The "L1" length can be increased up to 150 mm by customer's order.

NOZZLE	M 27 G 104 *	L1 (mm) **	L2 (mm)	Heater's Power (W)
M 27 G 104 * 47		47	33	180
M 27 G 104 * 57		57	43	200
M 27 G 104 * 67		67	53	200-250
M 27 G 104 * 77		77	63	250-300
M 27 G 104 * 87		87	73	250-300
M 27 G 104 * 97		97	83	250-300
M 27 G 104 * 107		107	93	300-350

Title :	
NOZZLE	
Model :	Tel. No.: (+98)2122436853 Website : <a href="http://www.ihco.com">www.ihco.com</a>
M 27 G 104 * L1	